

# K2MFF: Nearly a century of advancing the radio art at NJIT



Gareth Perry (KD2SAK), Francis Chu (KD2UWL), Pete Teklinski (WW2I), and K2MFF

New Jersey Institute of Technology



PRESENTED AT:



## ABOUT K2MFF AND NJIT

- K2MFF is the call sign for the New Jersey Institute of Technology Amateur Radio Club (NJITARC) in Newark, New Jersey.
- K2MFF's club shack is located in Faculty Memorial Hall at NJIT (40.742 N, -74.179 W).
- The club's main focus is to promote amateur radio amongst the student body and greater NJIT community, advance the radio art, and provide a public service.
- Approximately 12-15 club members.

### K2MFF CLUB OFFICERS

**President:** Francis Chu (KD2UWL)  
**Vice President:** Abdul-Quddus Adeniji (KD2QVE)  
**Secretary:** Nicholas Skific (KD2TNY)  
**Treasurer:** James Bronico (KD2THK)  
**Faculty Advisors:** Pete Teklinski (WW2I) and  
 Dr. Gareth Perry (KD2SAK)

		<b>NJIT ARC</b> 323 King Blvd. Newark, N.J. Essex County 07102	
		 <b>New Jersey Institute of Technology</b> University Amateur Radio Club <i>"THE HIGHLANDERS"</i>	
 10X #61734			
To Radio:		My pleasure to confirm our 2-way QSO	
<div> <div>DD</div> <div>MM</div> <div>YY</div> <div>UTC</div> <div>MHz</div> <div>RST</div> </div>			
Mode: <input type="checkbox"/> CW <input type="checkbox"/> SSB <input type="checkbox"/> FM <input type="checkbox"/> AM <input type="checkbox"/> RTTY <input type="checkbox"/> OTHER			
73		TNX	
		PSE QSL	

Rev: 1.00 Design Copyright © 1988 Roland Belanger/N1FTD

Rev: 4/23/92

### NJIT

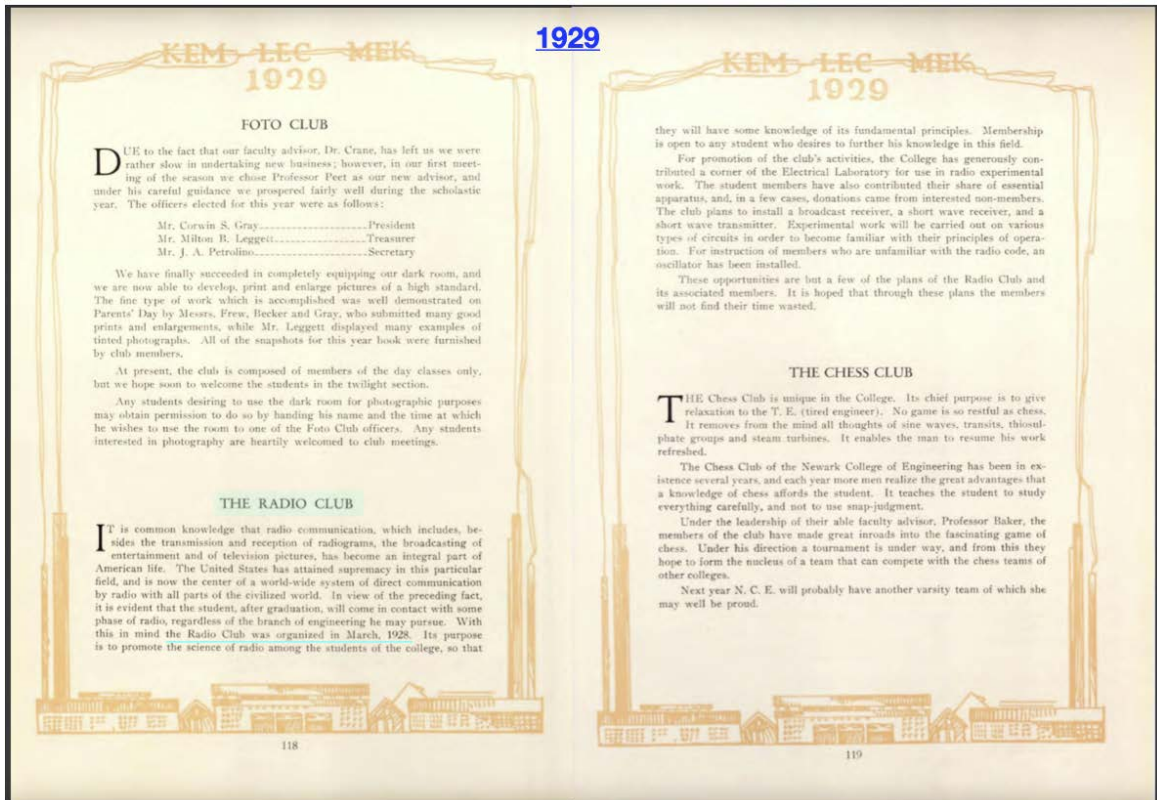
- NJIT is a public, polytechnic university (R1 Doctoral University) located in Newark, New Jersey.
- Opened in 1885 as the Newark Technical School.
  - The famous Edward Weston was a founding investor.

- Approximately 11,500 students (8,800 undergraduates; 2,700 postgraduates)

# K2MFF HISTORY

## The Beginning

- The earliest record of the NJITARC is from March 1928, when it was called "the Radio Club".



*A yearbook page which dates the origins of the club. The club operated with the goal of promoting the science of radio - it still does.*

- Until 1961, the club operated under callsign W2JPK.

**1938**

*A yearbook photo of the club members from 1938. Still in the early phases of the club, it operated its own short-wave station licensed by the FCC.*

### **W2JPK becomes K2MFF**

- In 1961, J. Sparks Remeczky (K2MFF) was killed in a motorcycle accident.
  - He was popular club member and also very active with the ARRL.
- The NJITARC adopted his call sign, K2MFF, in his honor.



Remember "Sparks", K2MFF? He used to be on NJN in 1957. I found his old QSL in my archives. It's a "one of a kind" and I decided to restore it, although it was quite a challenge because the card was old, yellowed, and very dirty. As I recall, he was killed in a motorcycle accident as a teenager. I believe a club station now uses his call as a memorial to him.



J. Sparks Remeczky's QSL card.



# His bike was cheap, 1961-? but it cost his life

By EDITH KERMIT ROOSEVELT

Only a year ago they published his picture. "Sparks Remeszky, one of Newark College of Engineering's mighty scooters," said the story in the Vector, NCE's student publication.

But now Sparks is dead. He died yesterday at St. Michael's Hospital in Newark of injuries suffered when the motorcycle he was riding struck Denise Gray, 1, of 41 Warren Pl., Newark, and then dragged the rider and girl 76 feet.

At the College, Sparks' classmates converged in the halls to

stocked boxes. They copied their assignments mechanically, in a daze.

"I can't see something like this happening to Sparks," said Paul Grunzig of 28 Livingston St., Newark. "He treated that motorcycle of his like a baby. He never got a scratch on it. He was awfully proud of an electronic ignition system he was building on it for our senior project."

John Burke of 315 York St., Jersey City, told how Sparks made the usual trip from his home to school each day on the motor bike.

"It took him 30 or 40 minutes from his home," he said. "He didn't do it to show off."

The son of a factory worker, John Remeszky, of 30 Kelly Parkway, Bayonne, Sparks was an only child — "a brilliant student with a promising future," was the way one teacher, Prof. Robert Rose, described him.

Yesterday afternoon at 3 p.m., Prof. Rose returned test papers to his class. Among them was Sparks' paper. He scored 70, second highest in his class.

"He's been interested in electrical gadgets since the age of 12," she said. "That's why they gave him the nickname 'Sparks' in grade school, though his real name's John."

Friday morning, moments before he hopped on his treasured motorcycle for the last time, Sparks showed his mother a document that proved the years of tinkering with gadgets had paid off. It named him a "honore associate" after completing his junior "engineers" course last June.

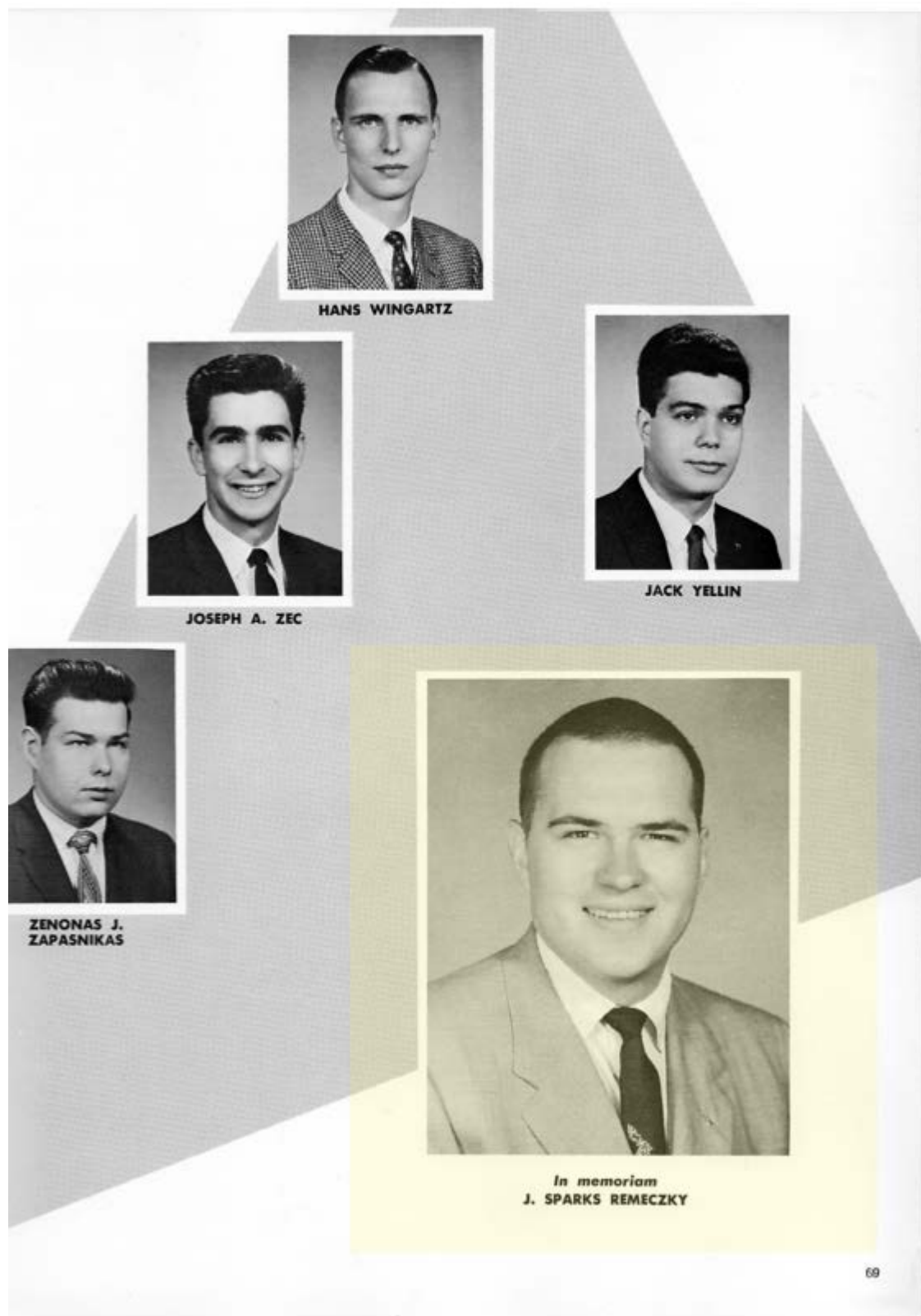
He walked out the door and 25 minutes later he and the child were sprawled on a Newark street. Sparks received severe head injuries when his head struck a parked car.

RESEARCHER FOR KRAMER HAD GET SOME INFORMATION ON WHAT HE'S DOING FOR HIMSELF SELLING W22VW OF THE ANNUAL CONFERENCE OF THE NEW JERSEY ON NOV. 5.

March 1961 QST

*Sorry did not make note of date of this article*  
EJ

An article describing Remeszky's accident.



*Yearbook page, ca. 1961, honoring J. Sparks Remeczky.*



# K2MFF SETUP AND SHACK

## K2MFF Repeater Information

**Frequency:** 147.225 MHz

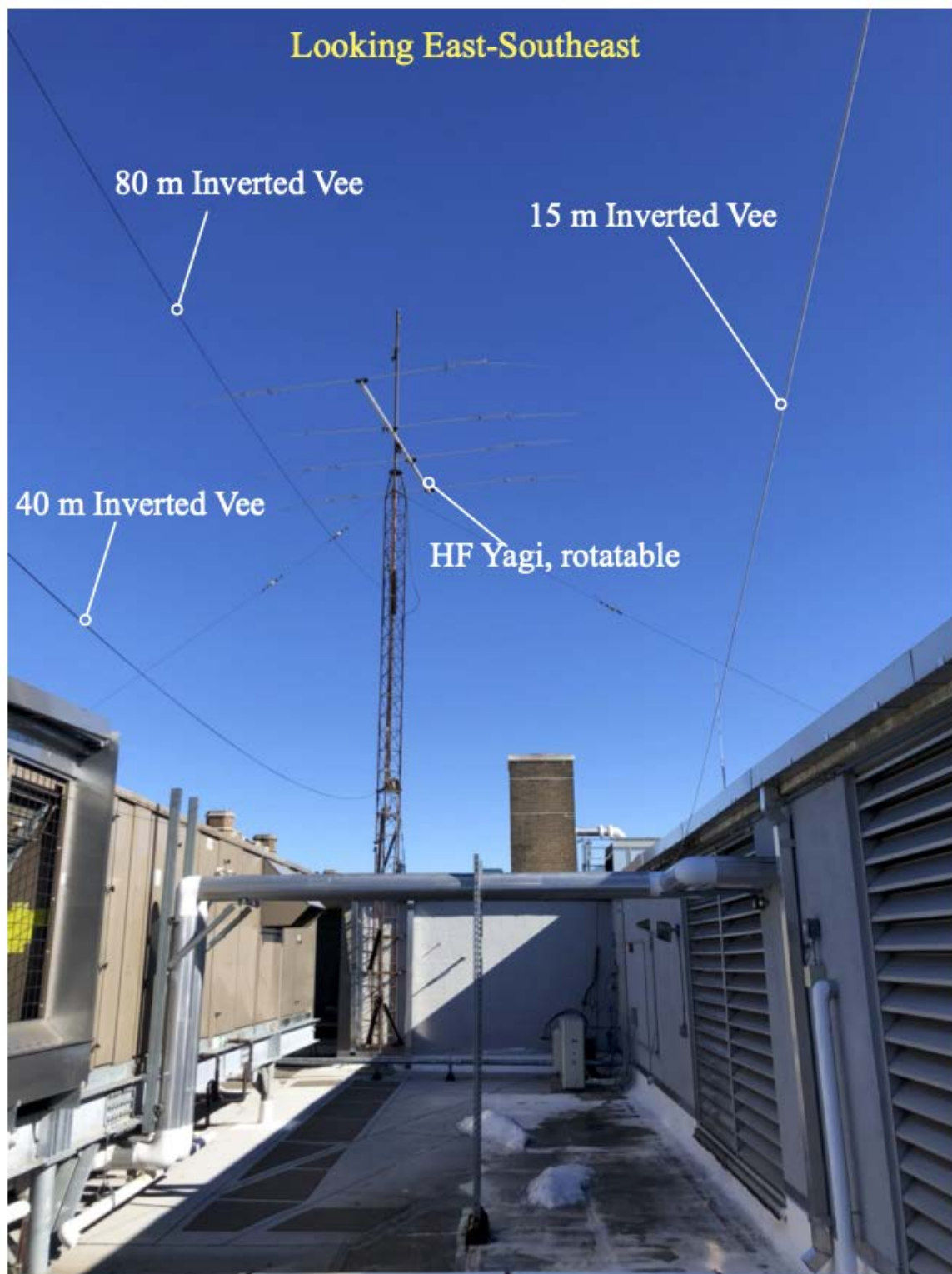
**Offset:** + 0.600 MHz

**PL:** 141.3 Hz

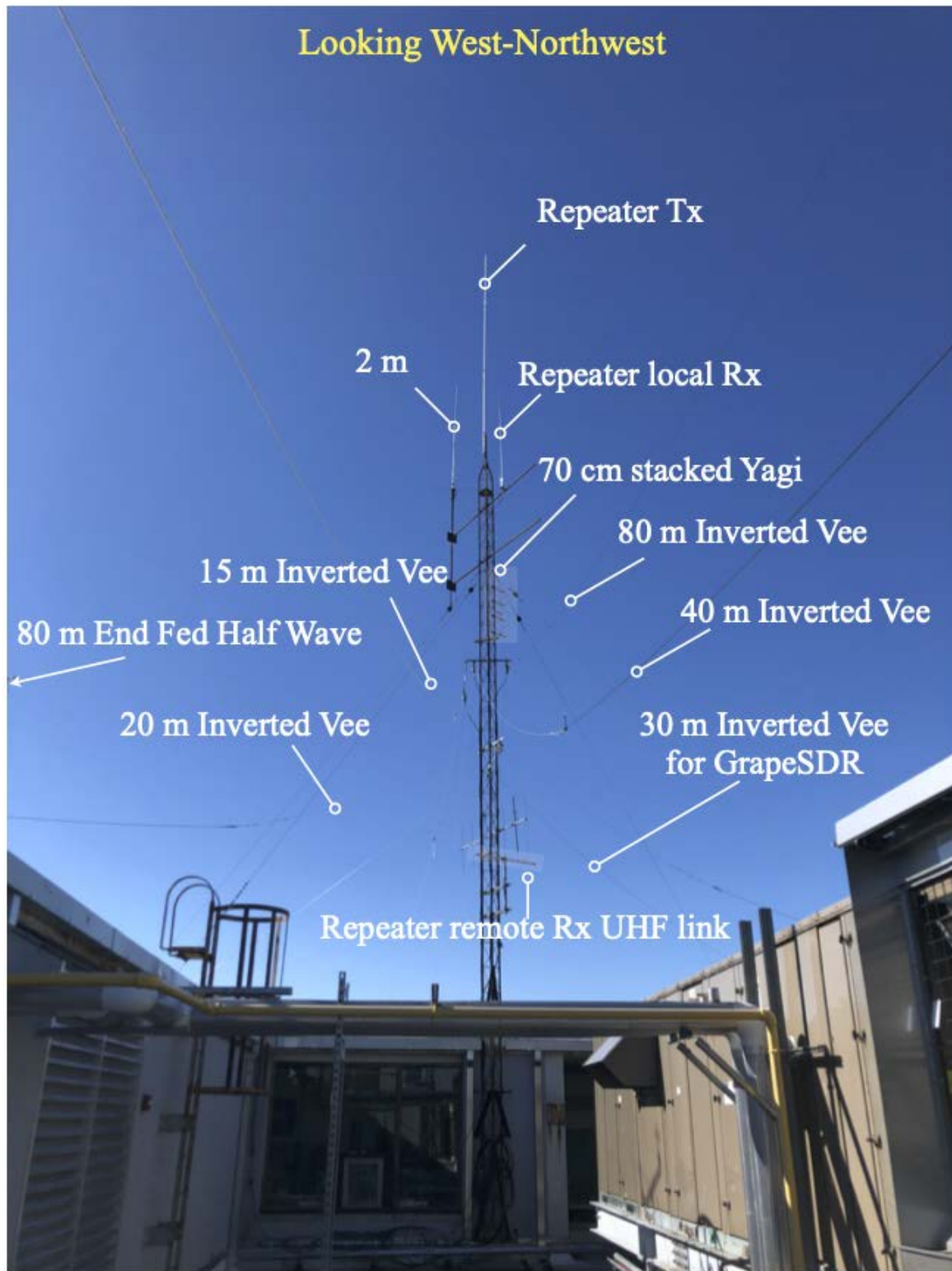
**EchoLink:** K2MFF-R #807982

- The main K2MFF repeater receiver is located on top of Faculty Memorial Hall at NJIT.
- A secondary, remote receiving location is located in Montclair, NJ, west of Newark, and links to the K2MFF repeater via a line-of-sight UHF link.
- K2MFF repeater coverage encompasses a large portion of the Newark-New York city metropolis.
- The K2MFF shack contains 4 operational stations.
- Operations at UHF, VHF, and HF are available.
- All antennas on Faculty Memorial Hall roof at NJIT.

## K2MFF Antennas



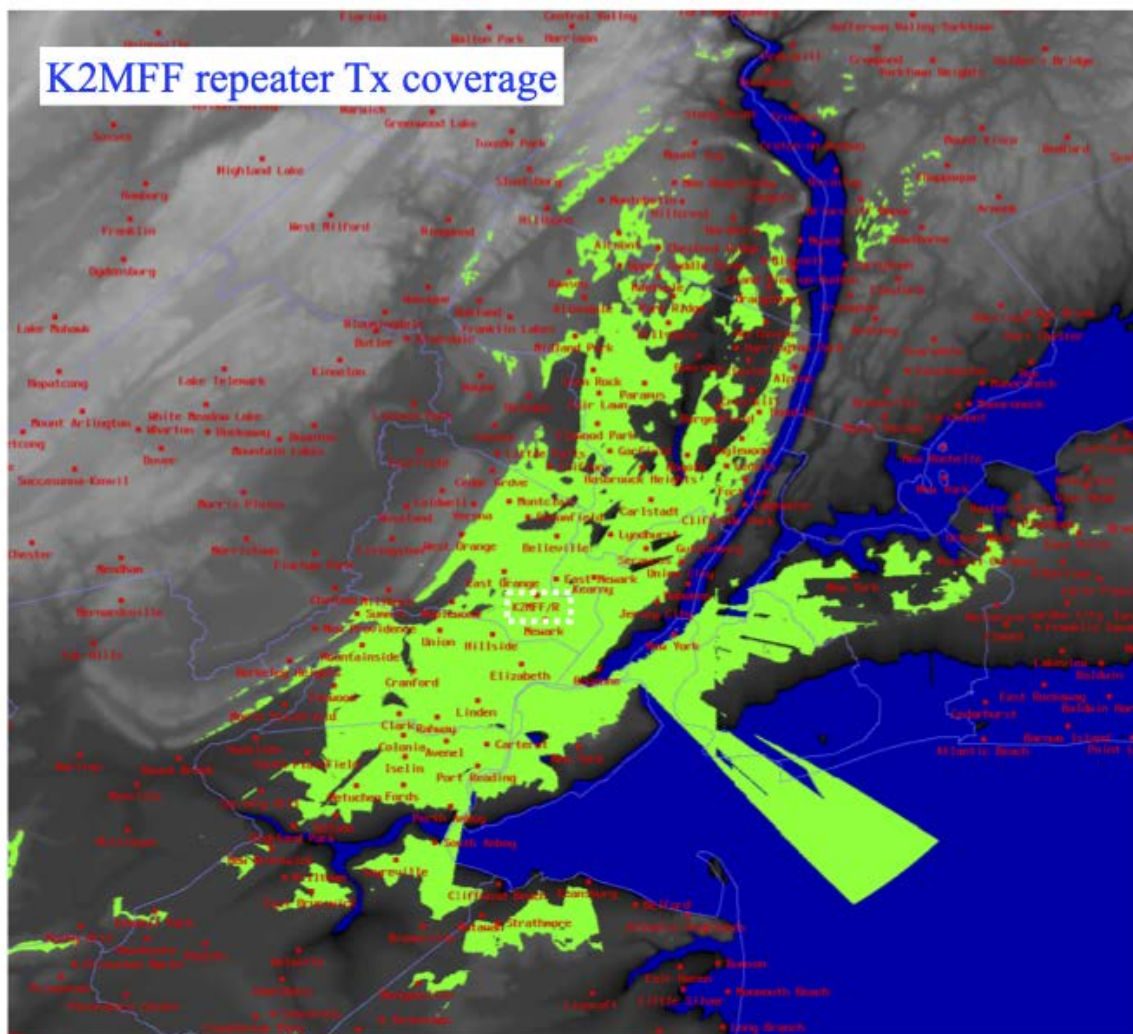
*K2MFF antennas on the roof of Faculty Memorial Hall at NJIT.*



*K2MFF antennas on the roof of Faculty Memorial Hall at NJIT.*



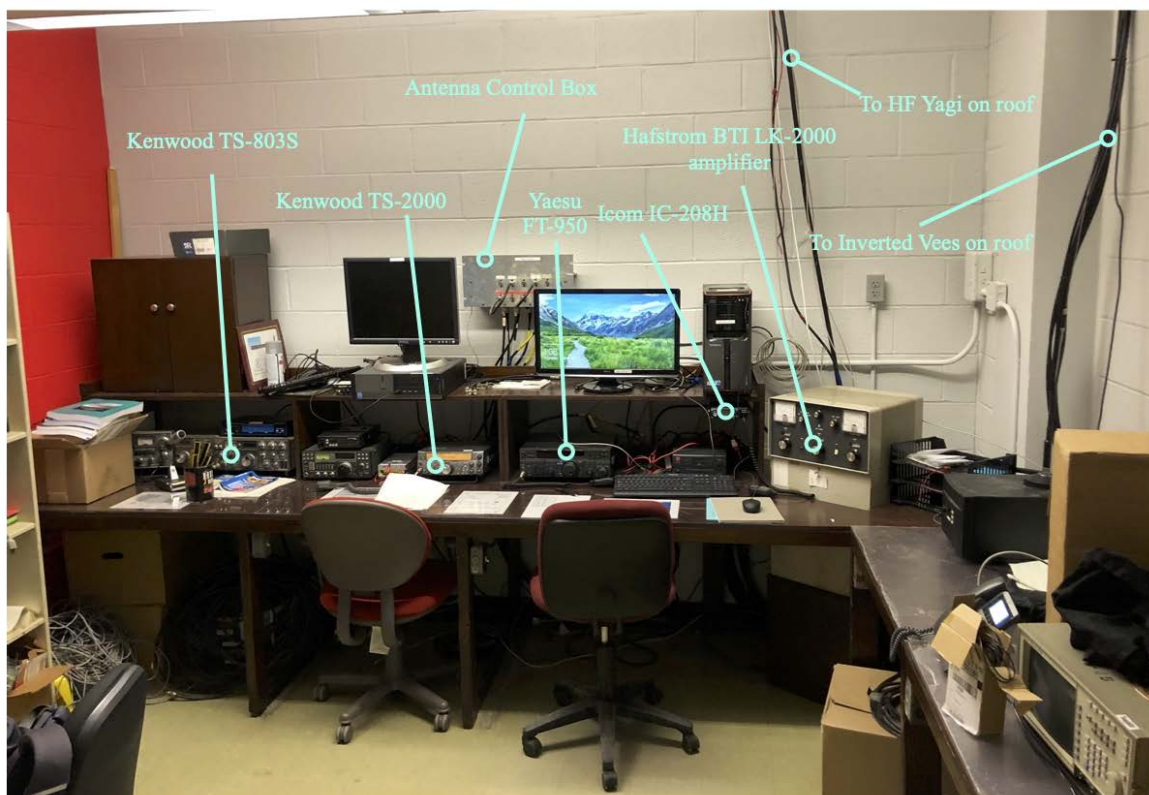
*K2MFF antennas on the roof of Faculty Memorial Hall at NJIT.*



*Splat! radio imaging output of K2MFF's line-of-sight repeater coverage in the New Jersey-New York City area.*

## K2MFF Shack





*The K2MFF shack located in Faculty Memorial Hall features 3 operable stations on HF and a single VHF/UHF station.*



## K2MFF ACTIVITIES

### Weekly Nets

- “K2MFF Highlander Net” on the K2MFF repeater, each Friday at 20:00 EST/EDT.
- “Net about nothing”, each Thursday at 19:30 EST/EDT, hosted by W2SJT (Penn-Jersey Amateur Radio Club).
  - The K2MFF repeater is linked to W2SJT for this net.

### Regular Testing Sessions

- K2MFF also provides testing (remote currently) multiple times per semester to allow non-licensed people to become a licensed amateur radio operator.

### Community Engagement

- K2MFF has organized a group of volunteers to provide communications support for the NYC Marathon for over 30 years.
- K2MFF is involved in on campus activities and student organization.
- K2MFF is also involved with mentorship programs and activities for young inquisitive minds, including aspirations for an ARISS (Amateur Radio on the International Space Station) event.



*K2MFF and friends participating in the NYC Marathon over the years.*

## Field Day



*K2MFF members participating in ARRL Field Day 2017 activities from an NJIT parking deck. Left to right: Rachel Frissell (KD2NDK), Chris Harrsch (KD2GYD), Trevor Summerfield (KD2KYC), Nathaniel Frissell (W2NAF), and Pete Teklinski (WW2I). Source: CQ Amateur Radio Magazine ([https://cq-amateur-radio.com/cq\\_highlights/2017-cq/2017-08-cq/2017-08-cq-zero-bias.html](https://cq-amateur-radio.com/cq_highlights/2017-cq/2017-08-cq/2017-08-cq-zero-bias.html)).*

## HamSCI

- K2MFF and its members have participated in and contributed to the HamSCI effort.
- K2MFF recently installed a GrapeSDR receiver at NJIT, and will install the next generation of this receiver at a remote location in rural New Jersey when it becomes available.
- K2MFF will also acquire and test the HamSCI Personal Space Weather Station when it becomes available.

## FUTURE DIRECTIONS

### Participation with HamSCI

- HamSci has demonstrated the potential for combining amateur radio activities with compelling solar-terrestrial science efforts.
- In the near future, K2MFF activities may include greater integration with contemporary science projects.
  - This includes being a leader in HamSCI pursuits.
- K2MFF recently installed the HamSCI Personal Space Weather Station (PSWS) Grape SDR (version 1) at NJIT.
  - Will install Grape Version 2 at NJIT Jenny Jump site.
- K2MFF will also host at least 1 Personal Space Weather Station when it becomes available.

### Integration with NJIT programs

- The K2MFF faculty advisors are exploring ways to increase NJIT undergraduate participation in K2MFF.
- K2MFF could serve as a setting for a variety of undergraduate and graduate research projects, for example.

### Community Engagement

- K2MFF is an excellent venue for STEM (Science, Technology, Engineering, and Math) activities for the next generation.
- K2MFF is exploring direct engagement activities along these lines, including the ARISS initiative.



## ABSTRACT

The New Jersey Institute of Technology Amateur Radio Club (NJITARC), K2MFF, has been an active part of the NJIT community for nearly a century. K2MFF has been a diligent community member, volunteering in such large-scale events as the New York City Marathon for over 30 years. Not only that, K2MFF, has been a fertile ground for developing young technical talent and advances in the radio art. Indeed, K2MFF has been a supporter and contributor to the HamSCI effort since its inception. In this presentation, we will offer a brief history of K2MFF, and discuss the current status and activities of the club. We will also offer some prognosis of the club's future directions.